



Fast Ag Facts for Dufferin and beyond

January 2017

Dufferin Federation of Agriculture

Contacts

The 2016-2017 Executive

Bill McCutcheon, President
519-766-7905 mobile txt
wmcutcheon@sympatico.ca

George Van Kampen, VP
519-940-2202
geordawn@gmail.com

Gail Little, VP
519-925-2983
lwfarm@live.com

DFA Secretary/Treasurer

Sherri Gray
PO Box 101
Orangeville, ON L9W 2Z5
519-215-3325 mobile
sherri.dfa@hotmail.com



The Dufferin Federation of Agriculture (DFA) works closely with the Ontario Federation of Agriculture (OFA.) DFA acts on behalf of over 500 OFA members in Dufferin to be the voice for farmers and farming—a vital part of the local economy.

Gord Grant, OFA
MSR Dufferin-Waterloo-
Wellington
877-343-5444
519-577-6970 txt,
877-638-9493 fax
gord.grant@ofa.on.ca
[@OFA4WWD](https://www.ofa4wwd.com)
www.ofa.on.ca



OFA has
Member Service
Representatives
(MSRs) across the
province to assist

OFA members and county
federations.

Dufferin's ag landscape

Dufferin farmers are owners and stewards of 48% of the total area of the County of Dufferin

Land Use, (hectares)	
Land in crops.....	48,949
Summerfallow land.....	195
Tame or seeded pasture.....	4,975
Natural land for pasture.....	5,132
Christmas trees, woodland &	7,753
All other land.....	2,741
Total area of farms.....	69,745

48%

Sustainable Agriculture



Rural Water Quality Program (RWQ)

- * Dufferin farmers have qualified for \$390,000 to assist with the cost of 166 projects to date in this program.
- * RWQ targets watershed projects that will protect and enhance water quality.
- * In 2016, 15 projects were completed: 11 tree planting projects and 4 water well projects.



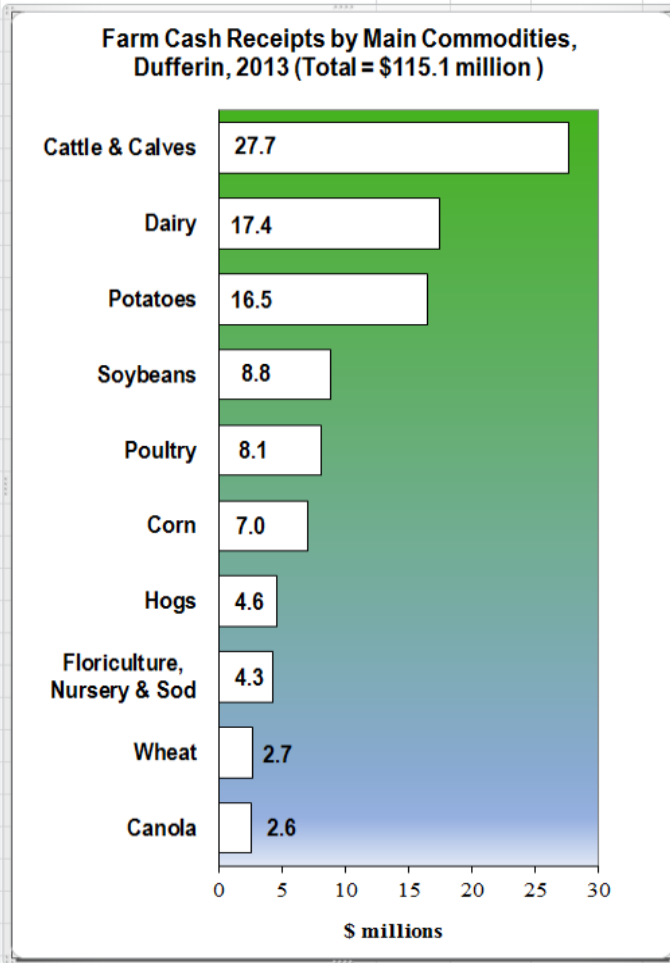
Environmental Farm Plan (EFP)

Ontario's 25 year EFP Legacy:

- * Over 35,000 farm families have completed an Environmental Farm Plan
- * A 2011 survey revealed that, on average, EFP participants invested \$53,900 of their own dollars in EFP projects
- * 95% of farmers said EFP had a positive impact on their farming.
- * What's Next? SF²Ps (Sustainable Farm & Food Plans) will expand on EFPs to inform and engage Ontario farmers to tackle new



Over \$115 M a year at the farm gate!



Source: OMAFRA County Profiles based on the 2011 Ag Census

The multiplier

Like all economic activity, the effects of farm production ripple through the local economy and beyond. A study commissioned by the Ontario Federation of Agriculture in 2013, estimated the multiplier effect of economic activity in Ontario's farm sector to be 2.25. Apply that to Dufferin farm activity and the role agriculture plays becomes even more impressive.



Source: Economic Contribution of the Ontario Farm Sector, October 2013 by JDR Consulting Group

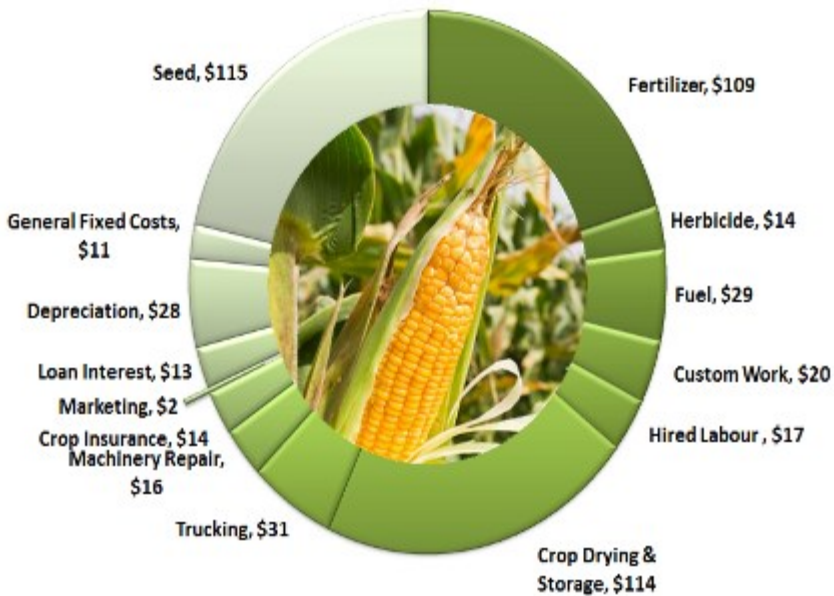
Farmers spend \$ to make \$

Over \$1,000 / year / beef cow

Annual Cost/head for a Cow/Calf operation- \$1,192



Over \$500 / acre for corn



Source: OMAFRA Enterprise Budgets, 2016

Some Dufferin ag stats

More than a third of Dufferin's farms generate \$50,000 or more in revenue every year.

Under \$10,000.....	233	
\$10,000 to \$24,999.....	165	
\$25,000 to \$49,999.....	118	
\$50,000 to \$99,999.....	88	
\$100,000 to \$249,999.....	74	
\$250,000 to \$499,999.....	55	
\$500,000 to \$999,999.....	36	
\$1,000,000 to \$1,999,999.....	18	
\$2,000,000 and over.....	8	35%

Twenty-six (26) are over \$1M per year

Year round	
Seasonal	13,762
Total	5,724
	19,486

Successful farm operators need hired farm labour. Over

19,000 weeks of work most of it year round are generated on Dufferin farms for hired farm help.



17% of the potatoes grown in Ontario are grown by Dufferin farmers

Dufferin farmers grow hay on nearly 18,000 hectares. The largest crop by area in the county.

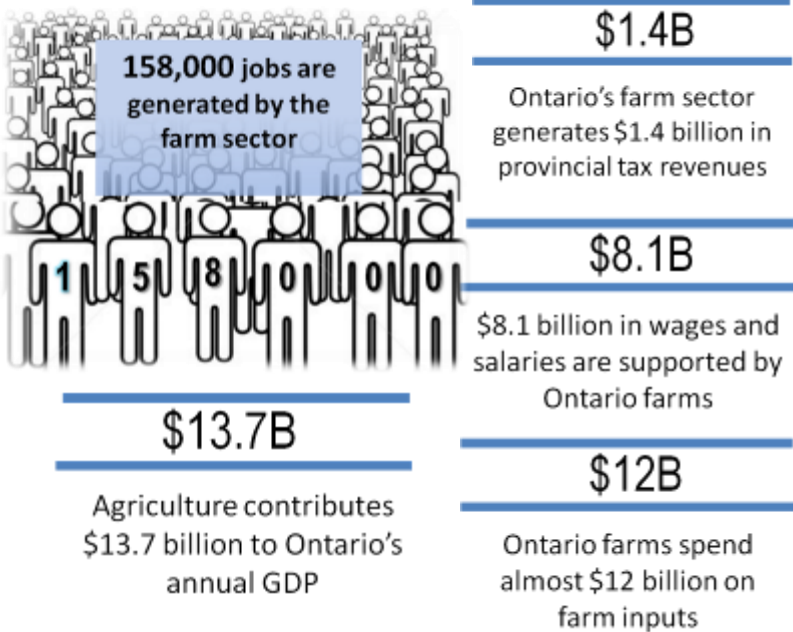


The population of cattle and calves in Dufferin is nearly 33,000. One good reason for Dufferin farmers to make hay while the sun shines.

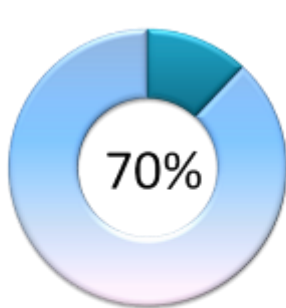


Ontario ag stats

Primary agriculture—on the farm



Rural Ontario—in the community



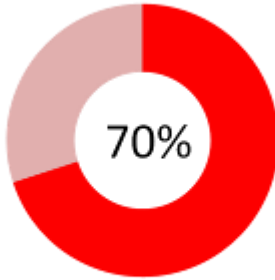
Rural Ontario is home to 70% of Ontario's farm sector employment



The farm sector is a driving force behind the province's rural economy accounting for 12.3% of rural Ontario GDP

Ontario ag stats

Along the value chain



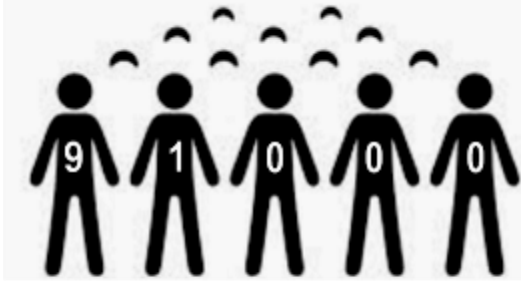
More than 70% of Ontario farm products remain within the province.

Along the value chain

\$21,300,000,000

Ontario's food and beverage processors contributed \$21.3 billion to the province's GDP in 2012

Along the value chain



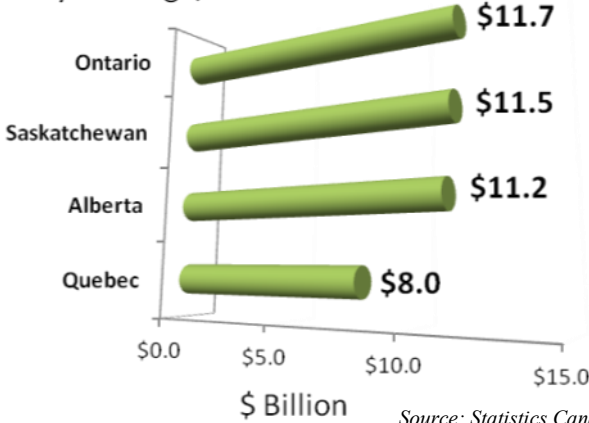
Food processing directly employs more than 91,000 workers across Ontario and more than 193,000 secondary jobs in other areas of the economy

Ontario Ag Stats

Ontario tops the provinces in agricultural output

Farm Cash Receipts

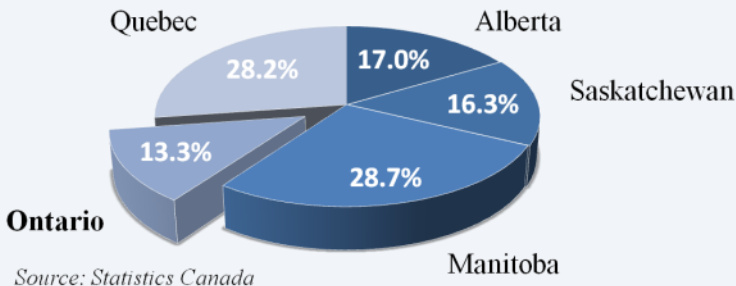
5 yr average, 2010 – 2014



Often overshadowed by other sectors of Ontario's economy, the Ontario ag sector is still a powerful economic engine.

Ontario Ag—a low draw on gov't \$\$\$

Ratio of Net Program Payments over Net Operating Income, 2010-2014



**Your Ag is already Big business.
Now make it Bigger!**



There's big business on your back concessions. Farming and the local businesses directly supporting agriculture have always been a significant and constant contributor to the rural economy of Ontario. Rural municipalities have a big role to play in nurturing agricultural growth. The Ontario Federation of Agriculture makes that easier for municipal councillors with the [**Checklist to Support Agricultural Growth in Your Municipality**](#). The Dufferin Federation of Agriculture is always ready to work with Dufferin municipalities. Please have a look at the checklist, then feel free to call and continue the discussion.